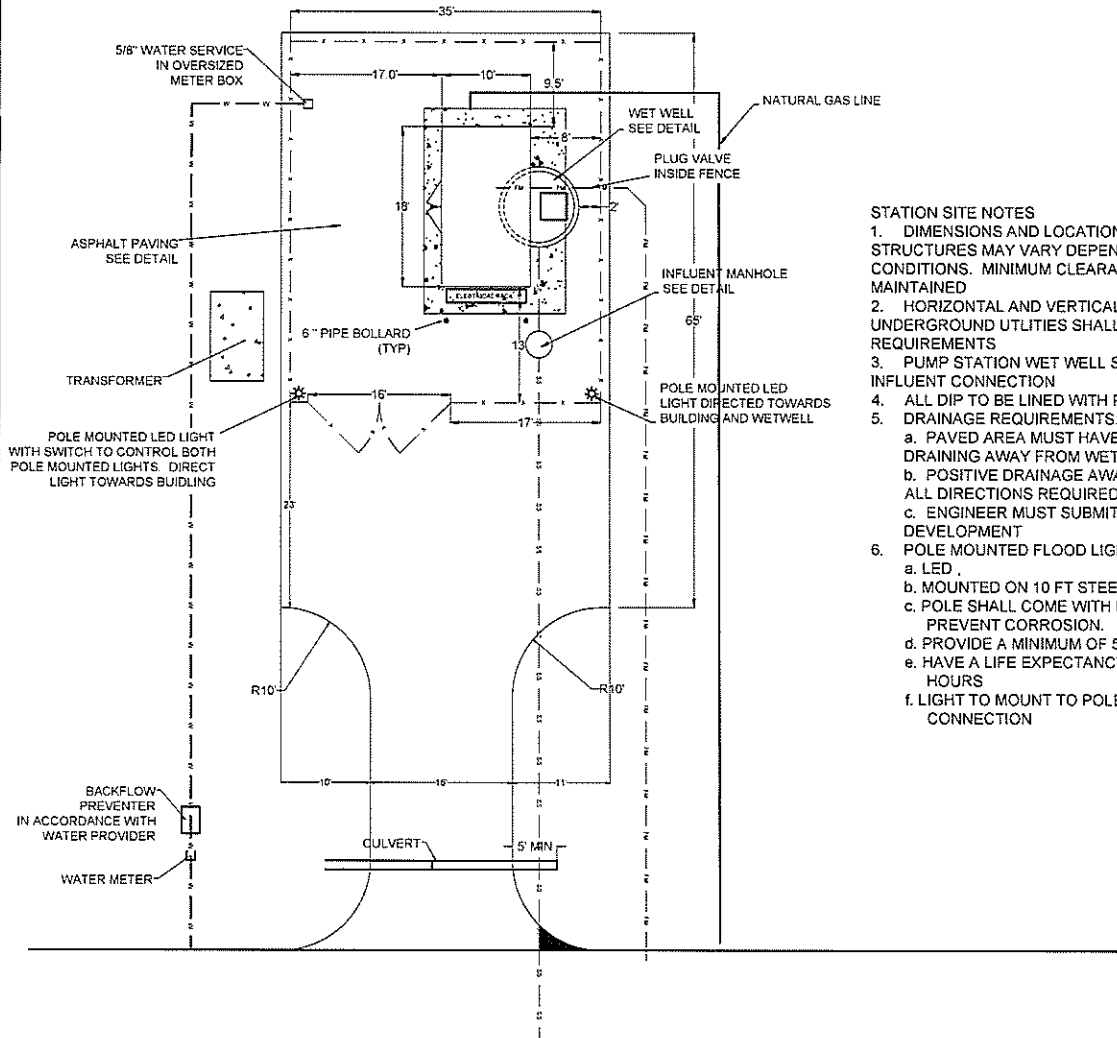


NOTES

- ① 6" C900 @1.0% INTO WET WELL ABOVE HIGH WATER LEVEL
- ② 6" CLEANOUT WITH CAP
- ③ ELECTRICAL RACK WITH WEATHER HOOD

GENERAL NOTES

- 1. SEPERATION OF UNDERGROUND UTILITIES SHALL COMPLY WITH DHEC STANDARDS
- 2. THE WET WELL SHALL HAVE A MAXIMUM OF ONE (1) INFLUENT CONNECTION
- 3. BUFFER REQUIREMENTS PER PLANNING AND ZONING
- 4. PAVED AREA MUST HAVE A MINIMUM 2% SLOPE DRAINING AWAY FROM WET WELL
- 5. POSITIVE DRAINAGE AWAY FROM EDGE OF PAVEMENT REQUIRED IN ALL DIRECTIONS.
- 6. DIMENSIONS AND LOCATIONS OF EQUIPEMENT AND STRUCTURES MAY VARY DEPENDING ON SPECIFIC SITE CONDITIONS AND EQUIPEMENT DESIGN. MINIMUM CLEARANCES AND DIMENSIONS SHALL BE MAINTAINED



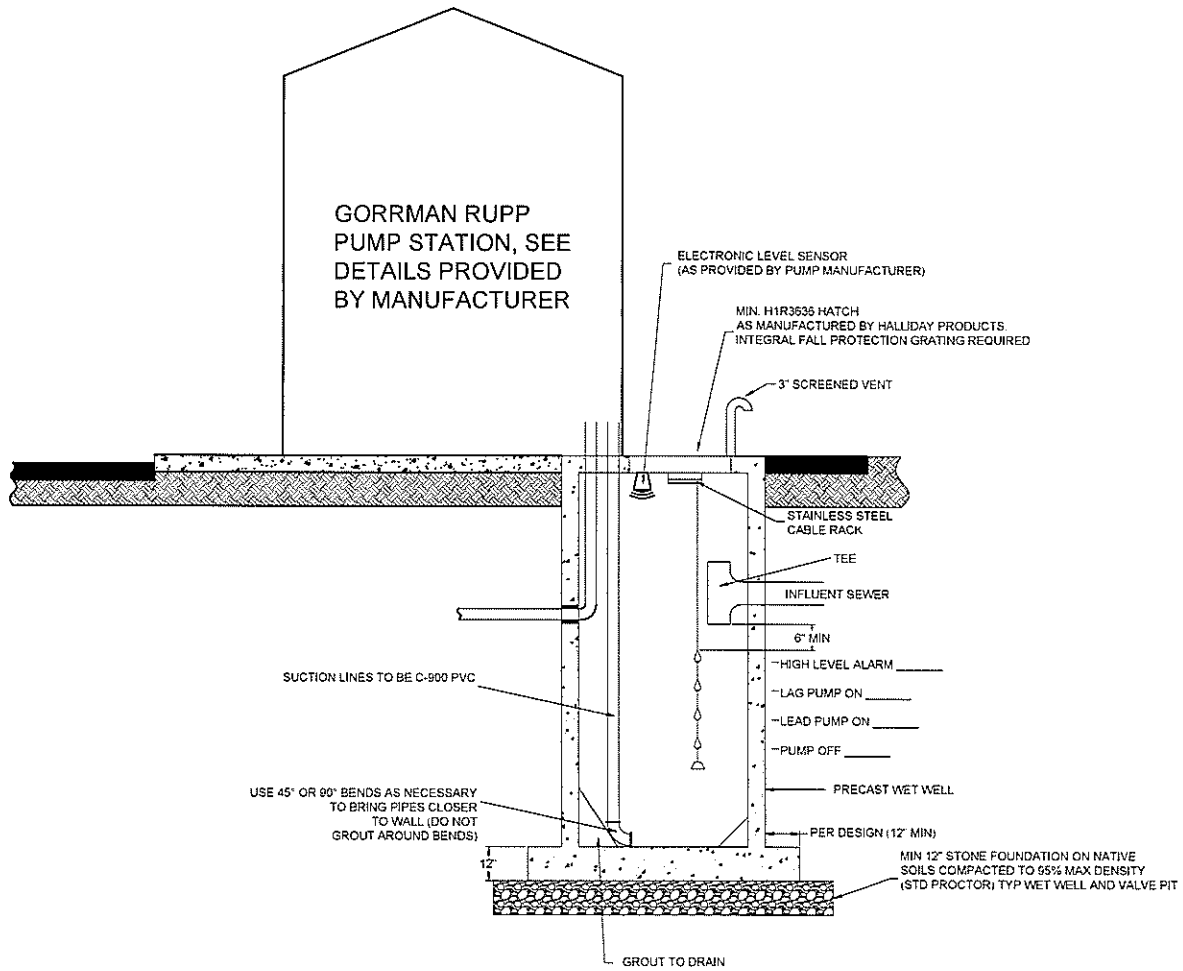
STATION SITE NOTES

- 1. DIMENSIONS AND LOCATIONS OF EQUIPEMENT AND STRUCTURES MAY VARY DEPENDING ON SPECIFIC SITE CONDITIONS. MINIMUM CLEARANCES AND DIMENSIONS MUST BE MAINTAINED
- 2. HORIZONTAL AND VERTICAL SEPERATION OF UNDERGROUND UTILITIES SHALL COMPLY WITH DHEC REQUIREMENTS
- 3. PUMP STATION WET WELL SHALL HAVE A MAXIMUM OF ONE INFLUENT CONNECTION
- 4. ALL DIP TO BE LINED WITH PROTECTO 401 COATING
- 5. DRAINAGE REQUIREMENTS:
 - a. PAVED AREA MUST HAVE A MINIMUM 2% SLOPE (5% MAX) DRAINING AWAY FROM WET WELL
 - b. POSITIVE DRAINAGE AWAY FROM EDGE OF PAVEMENT IN ALL DIRECTIONS REQUIRED
 - c. ENGINEER MUST SUBMIT DRAINAGE PLAN FOR DEVELOPMENT
- 6. POLE MOUNTED FLOOD LIGHTS SHALL BE
 - a. LED
 - b. MOUNTED ON 10 FT STEEL POLE.
 - c. POLE SHALL COME WITH FACTORY APPLIED FINISH TO PREVENT CORROSION.
 - d. PROVIDE A MINIMUM OF 5000 LUMENS
 - e. HAVE A LIFE EXPECTANCY OF A MINIMUM OF 50,000 HOURS
 - f. LIGHT TO MOUNT TO POLE USING SLIP FITTER CONNECTION




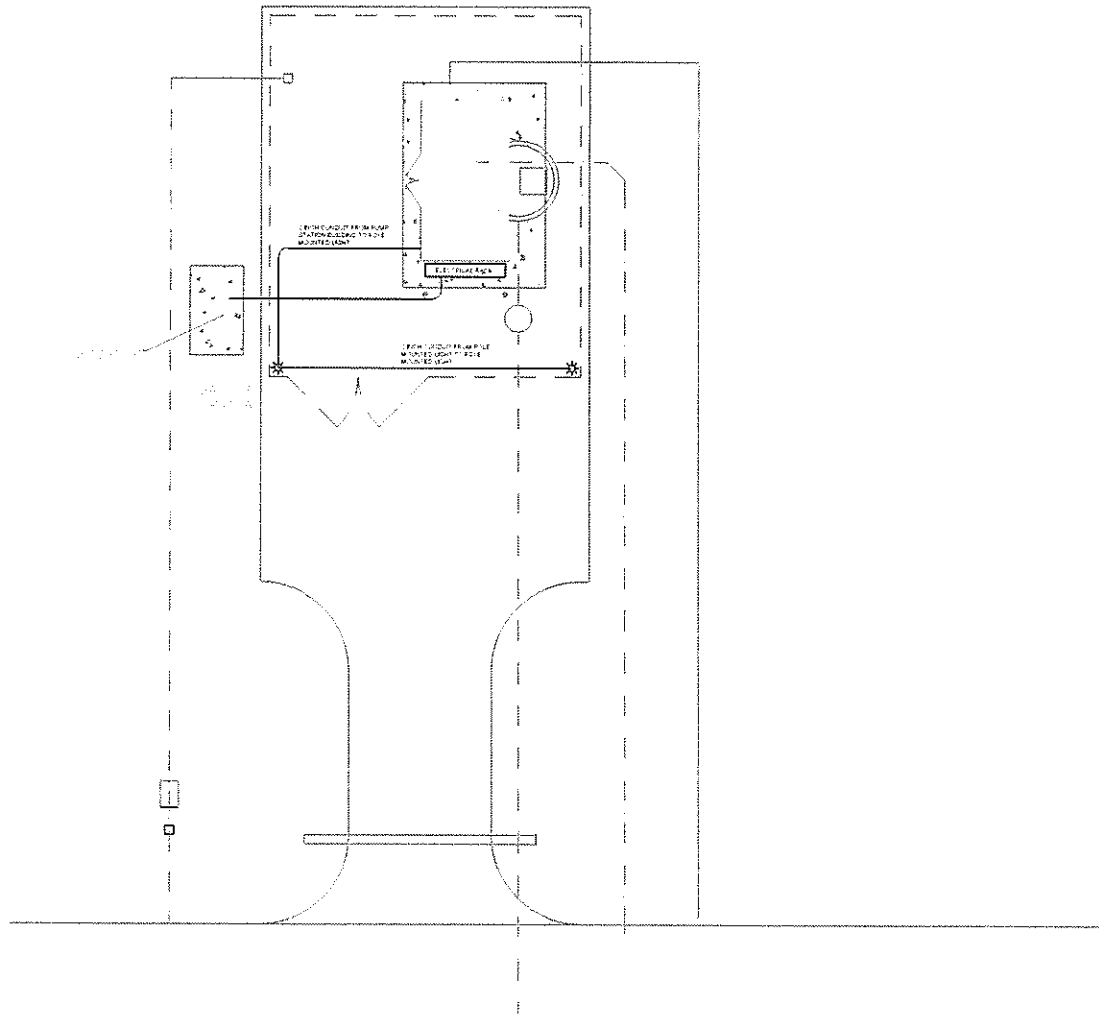
ANDERSON COUNTY SOUTH CAROLINA	JOB NAME:		DRAWN BY:TAH	CHK'D BY:DS
	GORMAN RUPP SITE PLAN		SCALE: 1=N.T.S.	
			DATE: 9/2022	
			JOB NUMBER	SHEET

REV	DESCRIPTION	BY	DATE
1	ADJUSTED PAVEMENT HATCH	TAH	6/23/2023



- NOTES
- ALL HARDWARE IN WET WELL TO BE 304L STAINLESS STEEL
 - ALL PIPE PENETRATION THROUGH WET WELL SHALL UTILIZE LINK-SEAL - MODEL C+S-316 OR APPROVED EQUAL
 - ALL WET WELL JOINTS WILL HAVE AN EXTERNAL 9" JOINT WRAP CENTERED ON JOINT
 - ALL DIP TO P-401 LINED
 - ALL CONNECTIONS IN WET WELL AND VALVE VAULT TO BE TRUE FLANGE TO FLANGE CONNECTIONS UNLESS OTHERWISE NOTED
 - BASE AND FIRST RISER UNIT TO BE CAST MONOLITHIC
 - THERE SHALL BE NO VALVES OR ELECTRICAL JUNCTION BOXES IN THE WETWELL
 - SUCTION LEG SHALL BE CONTINUOUS STICK OF PIPE (NO JOINTS) FROM PUMP SUCTION 90° ELBOW TO WET WELL BASE ELBOW

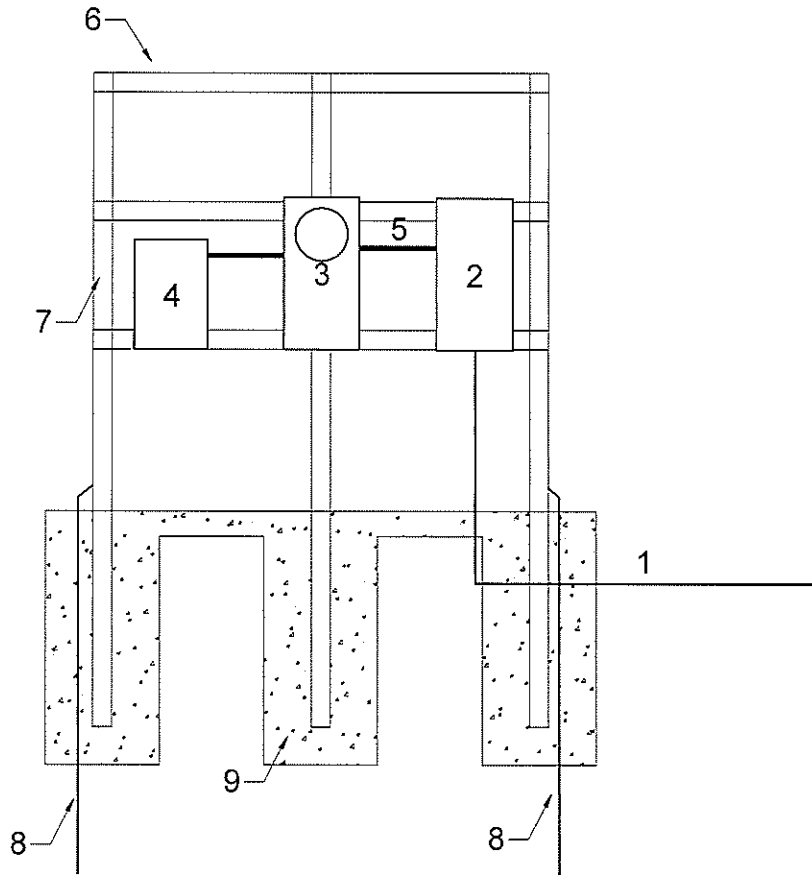
	JOB NAME:		DRAWN BY:TAH	CHK'D BY:DS
	GORMAN RUPP WET WELL PLAN		SCALE: 1=N.T.S.	
			DATE: 9/2022	
			JOB NUMBER	SHEET
REV	DESCRIPTION	BY	DATE	



JOB NAME:
**SUBMERSIBLE PUMP STATION
 ELECTRICAL PLAN**


DRAWN BY:TAH	CHK'D BY:DS
SCALE: 1=N.T.S.	
DATE: 9/2022	
JOB NUMBER	SHEET

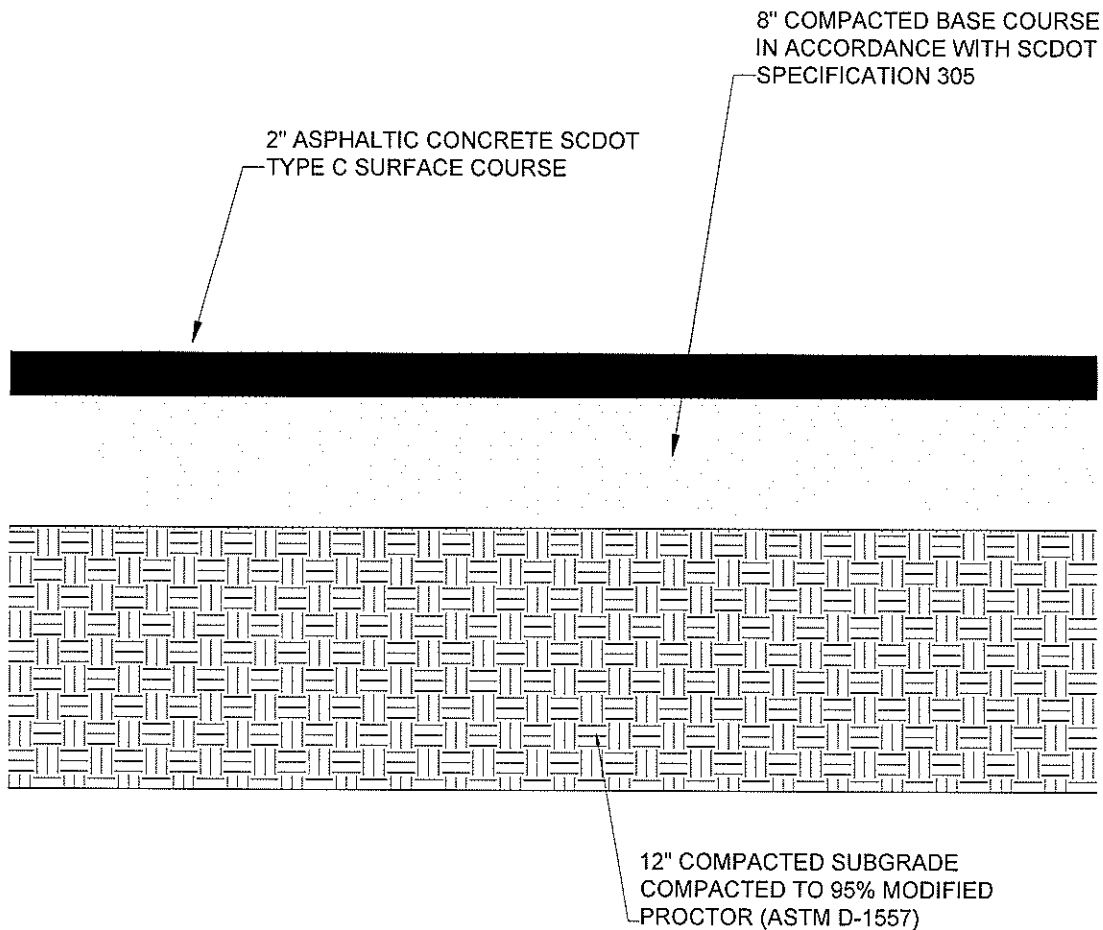
REV	DESCRIPTION	BY	DATE



KEY NOTES


1. NEW POWER SERVICE. VERIFY EXACT LOCATION
2. CT CAN AS DIRECTED BY LOCAL POWER COMPANY
3. METER AS DIRECTED BY LOCAL POWER COMPANY
4. SERVICE ENTRANCE DISCONNECT SWITCH AS MANUFACTURED BY EATON (OR APPROVED EQUAL), WITH NEMA 4X ENCLOSURE
5. 2-1/2" CONDUIT (TYPICAL)
6. WEATHER HOOD SEE DETAIL
7. MIN. 4" RIGID ALUMINUM CONDUIT SUPPORT POST THAT EXTEND A MINIMUM OF 6" ABOVE TOP OF ALL PANELS. TYPICAL SPACING SHALL BE 48" ON CENTER FOR STATIONS WITH 36" WIDE PUMP CONTROL PANEL ENCLOSURES
8. #6 GROUND IN 1" SCHEDULE 40 PVC CONDUIT. BOND TO MINIMUM OF THREE (3) GROUND RODS. GROUNDING TO BE IN ACCORDANCE WITH LATEST ADOPTED VERSION OF THE NEC
9. 4000 PSI CONCRETE WITH APPROPRIATE REINFORCING

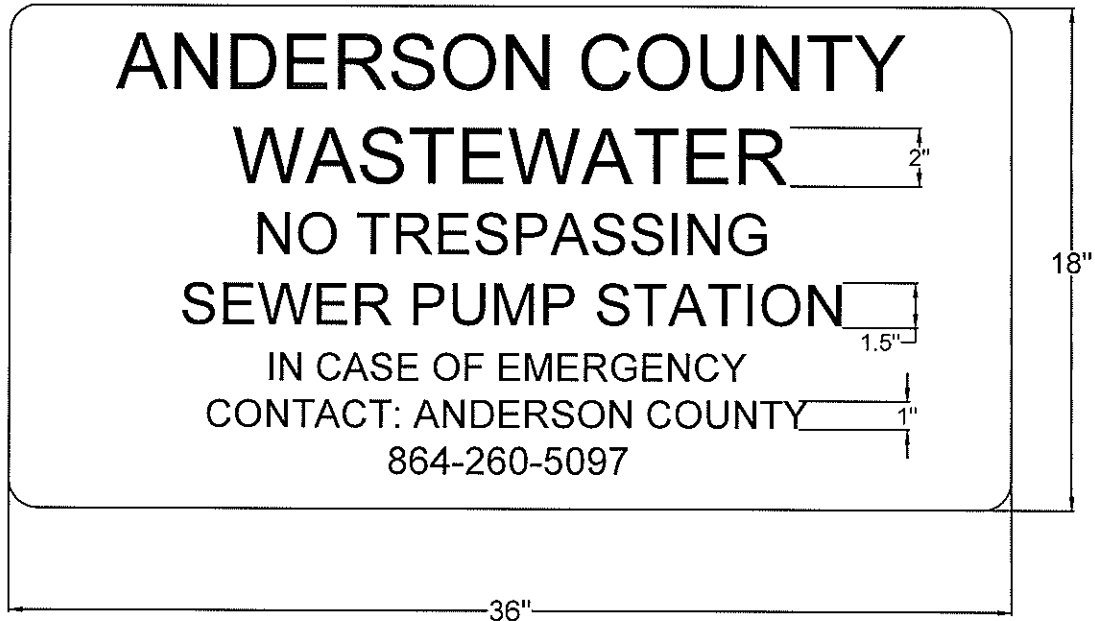
	JOB NAME:		DRAWN BY:TAH	CHK'D BY:DS
	GORMAN RUPP ELECTRICAL RACK		SCALE: 1=N.T.S.	
			DATE: 9/2022	
			JOB NUMBER	SHEET
REV	DESCRIPTION	BY	DATE	



NOTES:


1. PUMP STATION SITE SHALL BE GRADED TO ACHIEVE POSITIVE DRAINAGE AWAY FROM THE WETWELL
2. PUMP STATION ACCESS ROAD SHALL BE A MINIMUM OF 12' WIDE

	JOB NAME:		DRAWN BY:TAH	CHK'D BY:DS
	SUBMERSIBLE PUMP STATION SITE PLAN		SCALE: 1=N.T.S.	
			DATE: 9/2022	
			JOB NUMBER	SHEET
REV	DESCRIPTION	BY	DATE	



NOTES:

1. SIGN SHALL BE 16 GAUGE ALUMINUM WITH BLACK LETTERS ON A WHITE BACKGROUND
2. MOUNT SIGN TO CHAIN LINK FENCE

	JOB NAME:		DRAWN BY:TAH	CHK'D BY:DS
	PUMP STATION SIGN		SCALE: 1=N.T.S.	
			DATE: 9/2022	
			JOB NUMBER	SHEET
REV	DESCRIPTION	BY	DATE	